

12000-24

Adjustable Faceplate

Single Closet

Specification

Josam 12000-24 adjustable faceplate for closet connection assembly—used for securing studs on 6" centers with adjustable face plate with integral test cap, chrome plated hardware and neoprene fixture gasket.

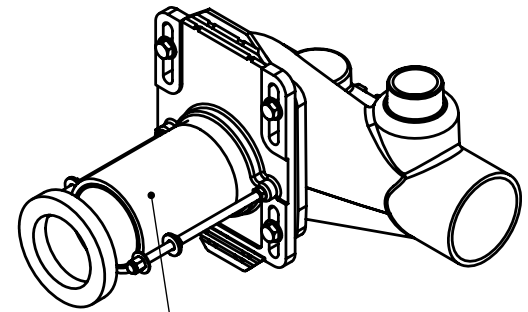
** (ABS extension - must be ordered separately). **

Note: Shown with 10674 fitting.

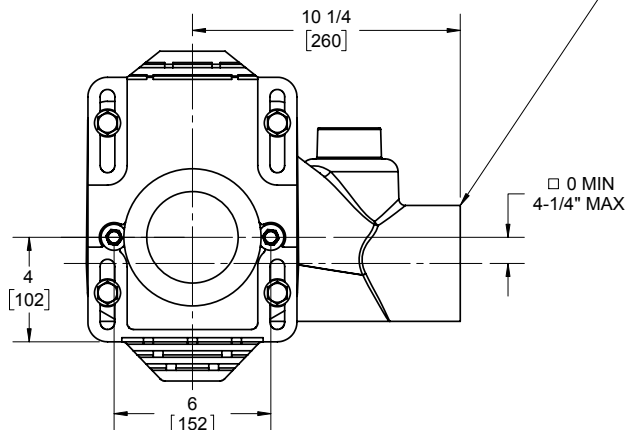
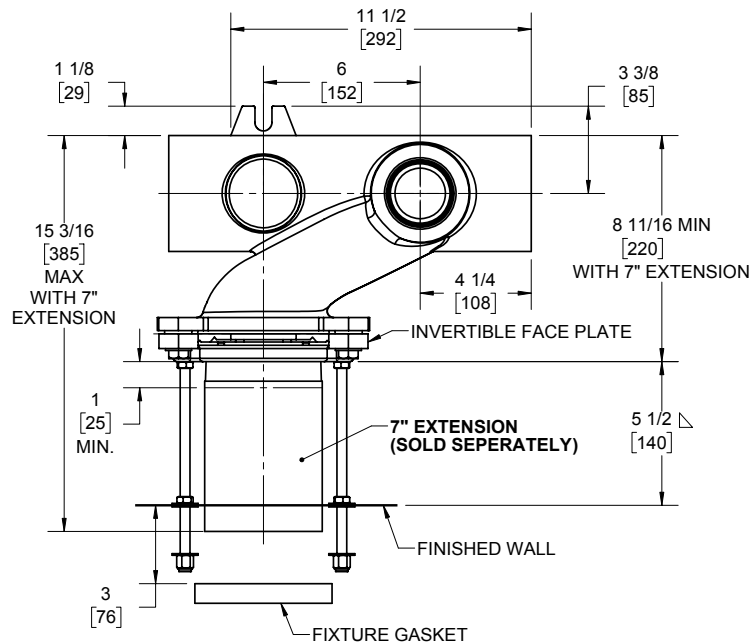
Note: For blowout closets use plate in upper position only.

△ For dim shorter than 5-1/2" (1" min) cut extension. For longer extension (10-1/2" max) specify (-10).

□ Dimensions for siphon jet blowout are 2-1/4" min and 4-1/4" max.



07095A or 07095E
SOLD SEPARATELY



Josam product specifications in U.S. customary units are approximate and provided for reference only. For precise measurements, please contact Josam Technical Support. Josam reserves the right to change or modify product design, construction, specifications, or materials without prior notice and without incurring any obligation to make such changes and modifications on Josam products previously or subsequently sold.

Notes:



A WATTS Brand