

12000-CR

Compression Ring

Carrier Assembly

Specification

Josam 12000-CR series coated cast iron adjustable carrier body, invertible for siphon jet or blowout closets, includes anchor foot, jiffy seal gasket, compression nut and O-ring seal.

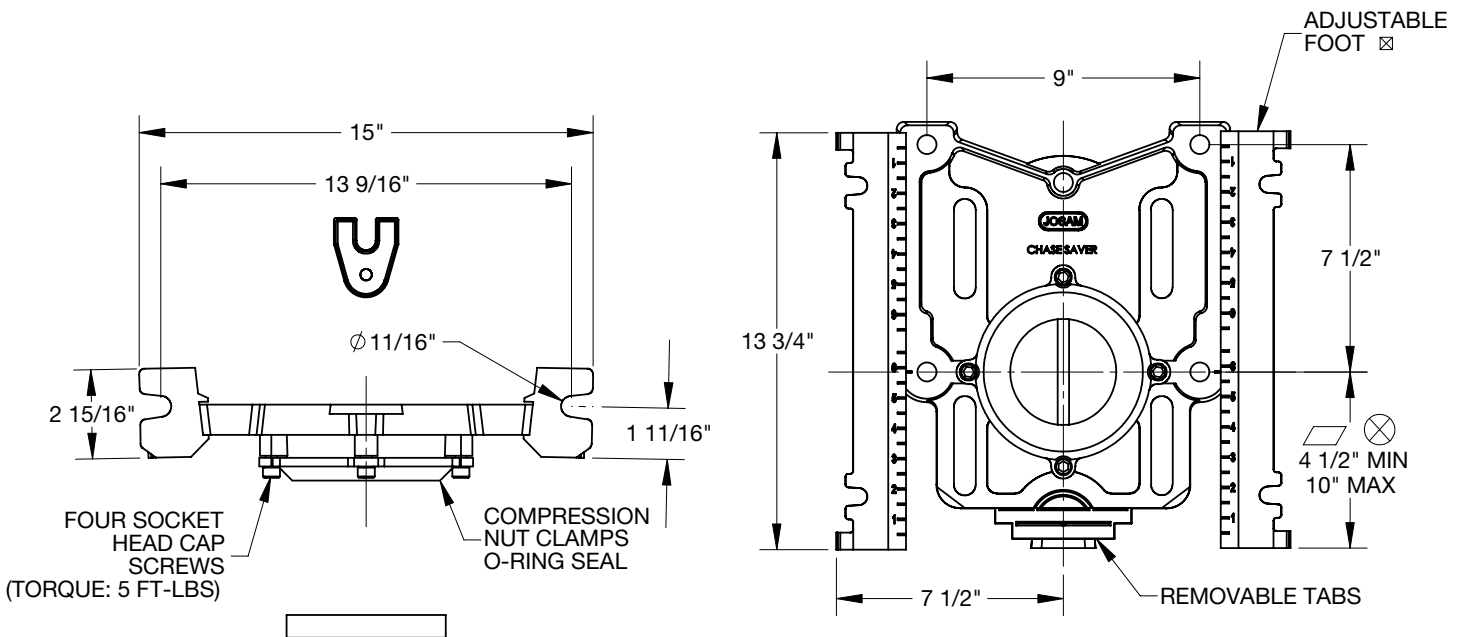
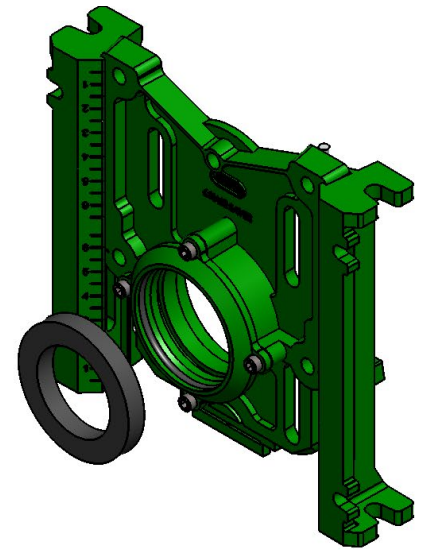
Note: See specification from carrier fitting for system options.

☒ Recommend feet be secured to floor with 1/2" bolts and anchors (by others).

Siphon jet dims shown.
For blowout dims, use:

▱ Min 11" and max 16 1/2".

⊗ For siphon jet roughing over 6" or blowout roughing over 12-1/2" specify on order.



Josam product specifications in U.S. customary units are approximate and provided for reference only. For precise measurements, please contact Josam Technical Support. Josam reserves the right to change or modify product design, construction, specifications, or materials without prior notice and without incurring any obligation to make such changes and modifications on Josam products previously or subsequently sold.

Notes:



A WATTS Brand