

12000-PF-PAF

Closet Carrier

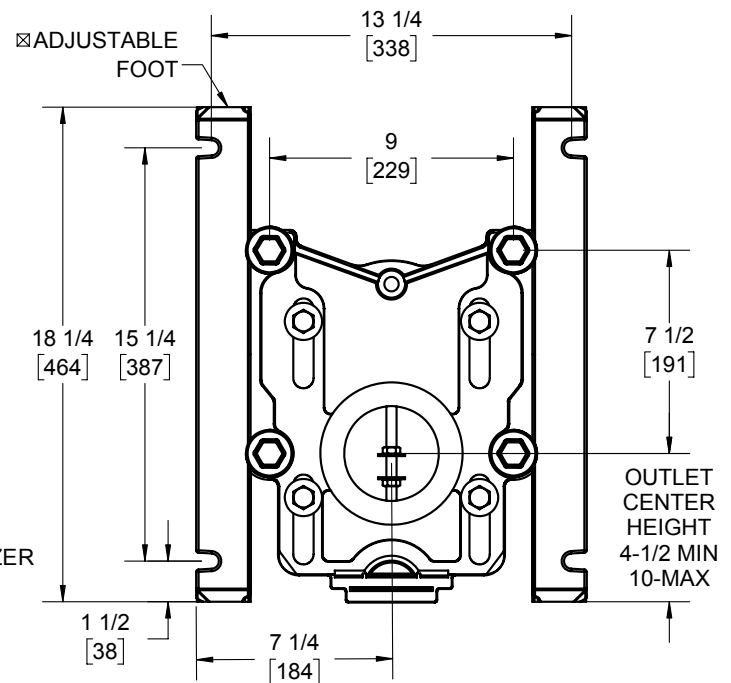
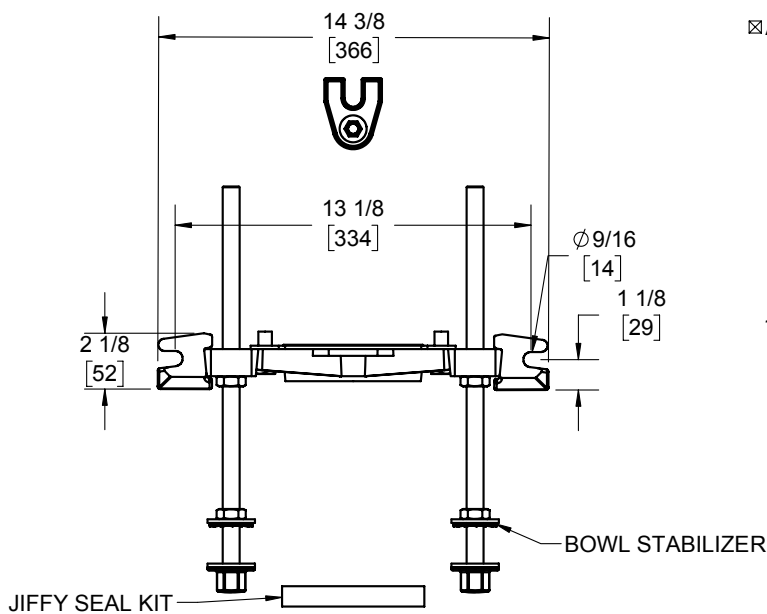
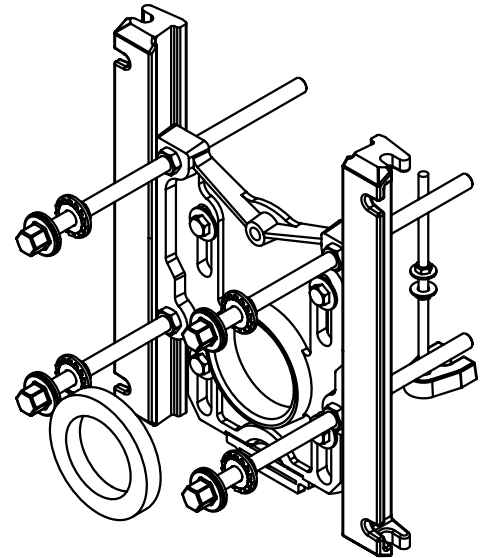
Pylon Foot

Specification

Josam 12000-PF-PAF series coated cast iron adjustable carrier body, invertible for siphon jet or blowout closets, pylon feet, anchor foot, plated hardware and neoprene fixture gasket.

Note: See specification from carrier fitting for system options.

- ☑ Recommend feet be secured to floor with 1/2" bolts and anchors (by others).



Josam product specifications in U.S. customary units are approximate and provided for reference only. For precise measurements, please contact Josam Technical Support. Josam reserves the right to change or modify product design, construction, specifications, or materials without prior notice and without incurring any obligation to make such changes and modifications on Josam products previously or subsequently sold.

Notes:



A WATTS Brand