

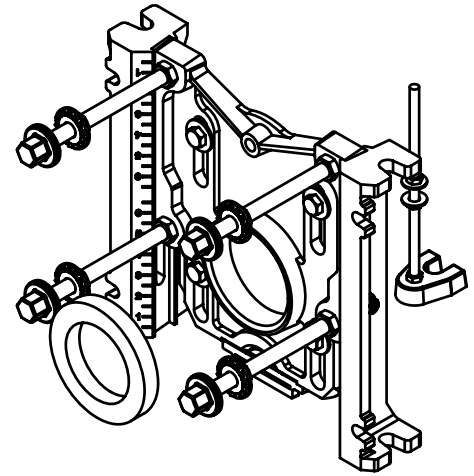
# 12000-PF

# Trim Pack

## With Pylon Foot

## Specification

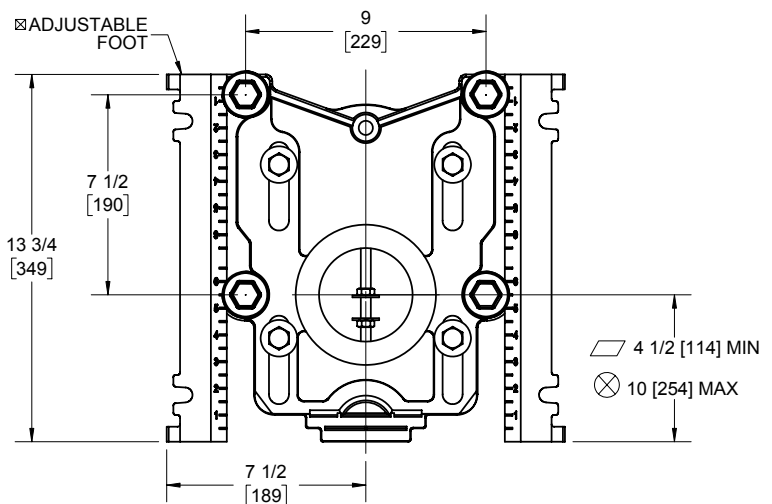
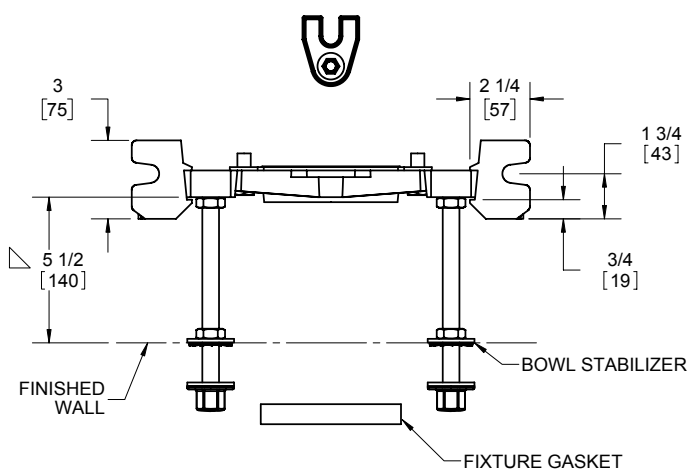
Josam 12000-PF series coated cast iron adjustable carrier body, invertible for siphon jet or blowout closets, pylon feet, anchor foot, plated hardware and neoprene fixture gasket.



- ⏏ For dimension shorter than 5-1/2" (1" min) cut extension. For longer extension (10-1/2" max) specify (-10).
- ☑ Recommend feet be secured to floor with 1/2" bolts and anchors (by others).
- ⊗ For siphon jet roughing over 6" or blowout roughing over 12-1/2" specify on order.

Siphon jet dims shown.  
For blowout dims, use:

- Min 2" and max 4".  
 ▱ Min 11" and max 16 1/2".



Josam product specifications in U.S. customary units are approximate and provided for reference only. For precise measurements, please contact Josam Technical Support. Josam reserves the right to change or modify product design, construction, specifications, or materials without prior notice and without incurring any obligation to make such changes and modifications on Josam products previously or subsequently sold.

Notes:



**A WATTS Brand**