

12700-XSD

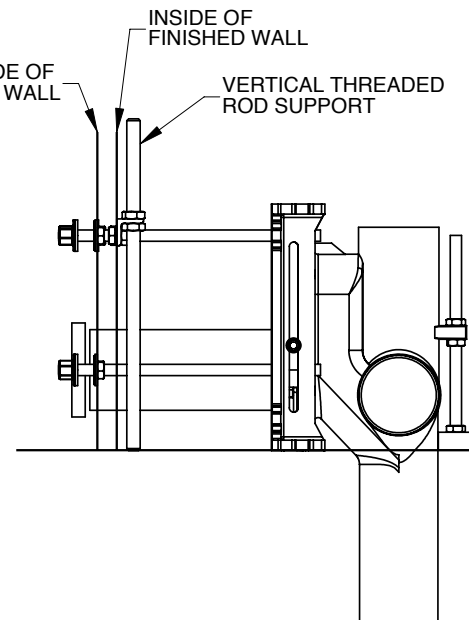
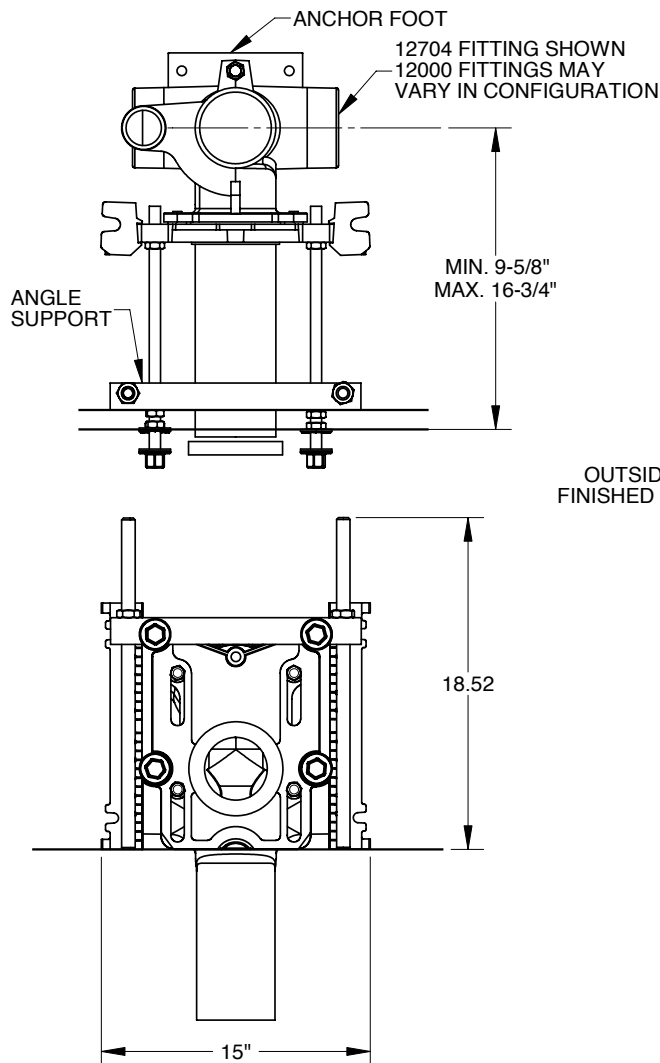
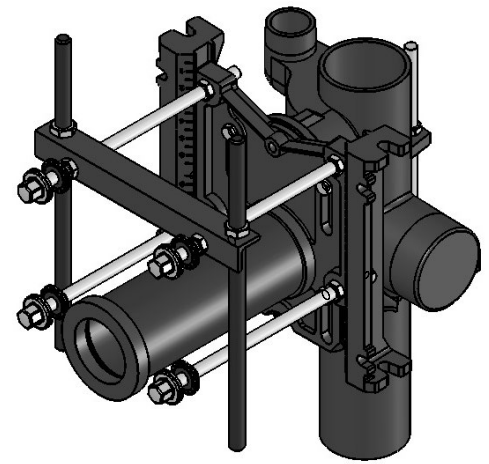
Bariatric Carrier

Specification

Josam 12700-XSD series coated cast iron vertical 4" no-hub fitting with 2" no-hub vent and adjustable carrier body, invertible for siphon jet or blowout closets, with ABS extension with integral test cap, pylon feet, anchor foot, angle support, threaded rod, plated hardware and neoprene fixture gasket.

This product meets or exceeds the requirements of ANSI A112.6.1M-1997 when tested at 1,000 pounds.

Recommend concrete anchors with 750 LBS. Pull-out force each.



Josam product specifications in U.S. customary units are approximate and provided for reference only. For precise measurements, please contact Josam Technical Support. Josam reserves the right to change or modify product design, construction, specifications, or materials without prior notice and without incurring any obligation to make such changes and modifications on Josam products previously or subsequently sold.

Notes:



A WATTS Brand