

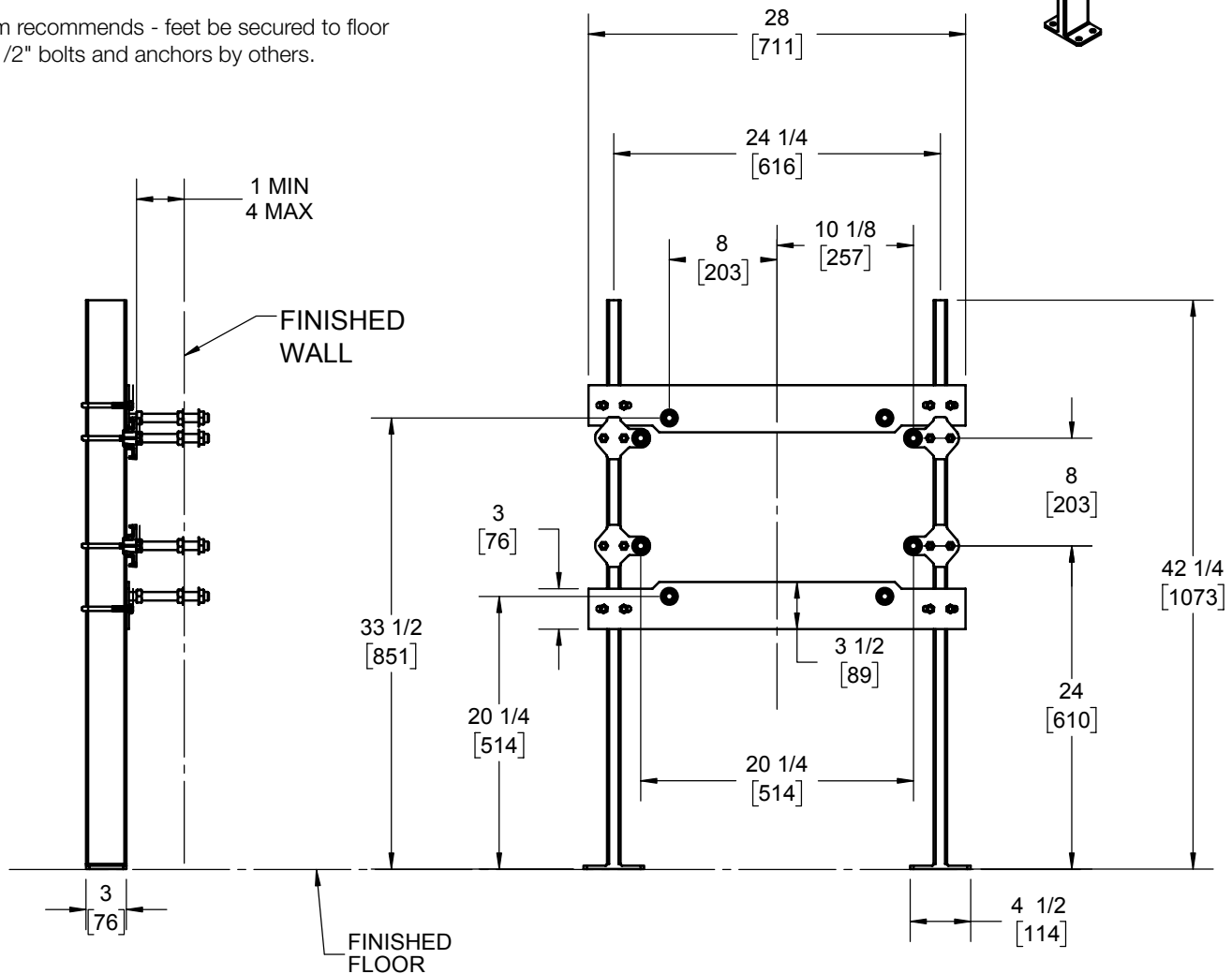
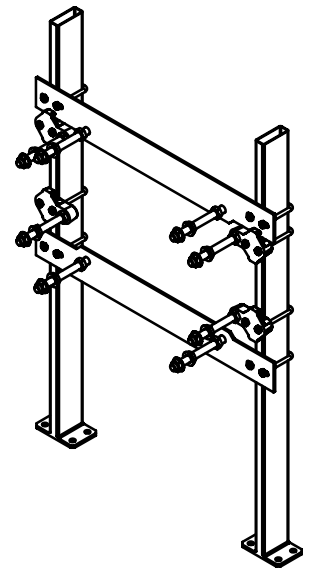
17720-66-M1783

Sink Carrier WH3740BAR Specification

Josam 17720-66-M1783 series floor mounted sink carrier with support plates, adjustable rods, headers, and structural uprights.

Notes: Used to mount whitehall manufacturing WH3740BAR. Not all hardware shown.

Josam recommends - feet be secured to floor with 1/2" bolts and anchors by others.



Product is non-cancellable
and non-returnable.

Name: _____ Signature: _____ Date: _____

Josam product specifications in U.S. customary units are approximate and provided for reference only. For precise measurements, please contact Josam Technical Support. Josam reserves the right to change or modify product design, construction, specifications, or materials without prior notice and without incurring any obligation to make such changes and modifications on Josam products previously or subsequently sold.

Notes:



A WATTS Brand