

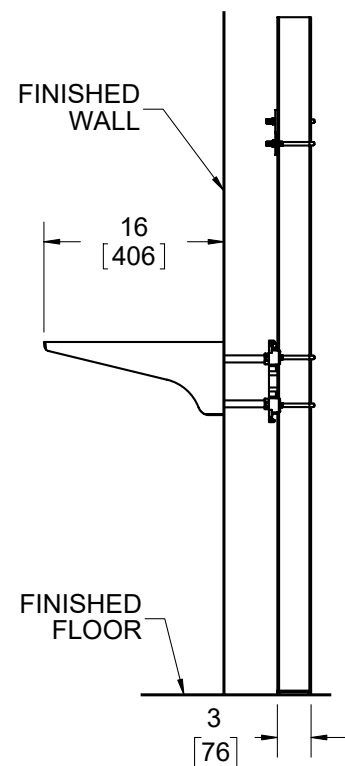
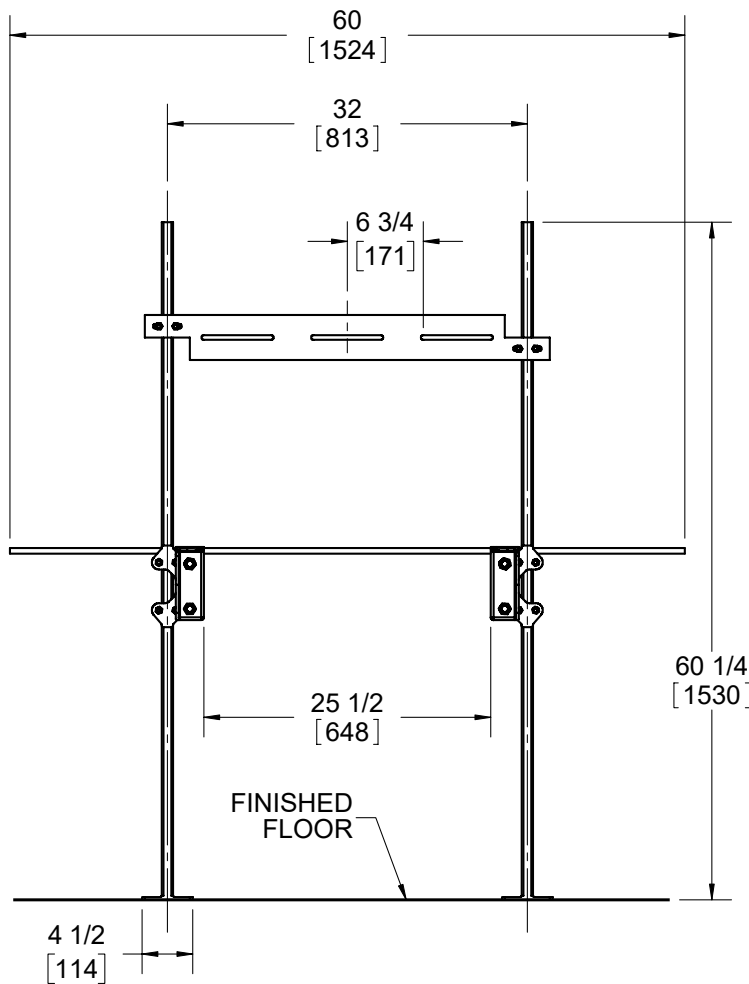
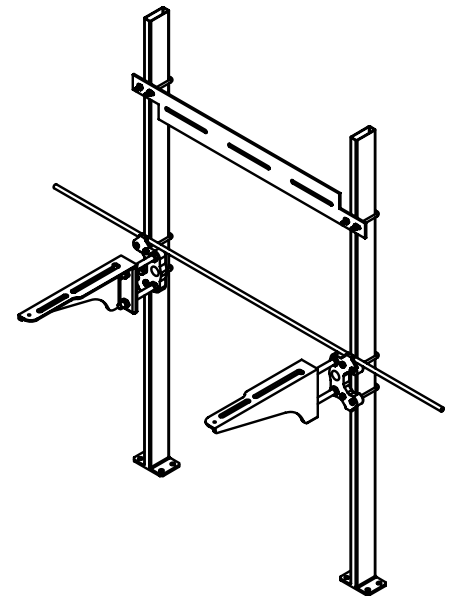
17720-M1651-1

Single Station Sink Carrier Specification

Josam 17720-M1651-1 series floor mounted carrier with hanger plate, adjustable headers, exposed arm, and welded foot structural uprights.

Notes:

1. Not all hardware is shown.
2. For willoughby scrub sink CWSSS-1
3. Josam recommends - feet be secured to floor with 1/2" bolts and anchors by others.



Josam product specifications in U.S. customary units are approximate and provided for reference only. For precise measurements, please contact Josam Technical Support. Josam reserves the right to change or modify product design, construction, specifications, or materials without prior notice and without incurring any obligation to make such changes and modifications on Josam products previously or subsequently sold.

Notes:



A WATTS Brand