

24200

Drain

Promenade Top Wide Flange

Specification

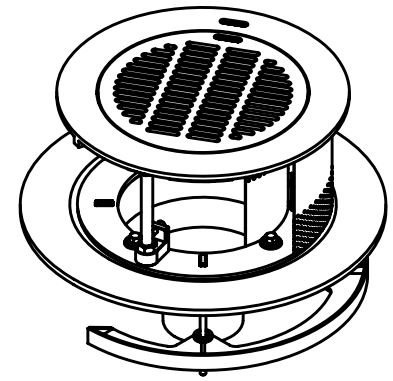
Josam series 24200 coated cast iron adjustable “all-level” drain round pedestrian grate set in round anchored frame leveled on adjustable threaded rods, removable perforated stainless steel filter, concrete forming and retaining ring, cast iron non-puncturing clamp ring, large sump with wide flange and bottom outlet inside-caulk (-X type) connection.

Grate free area: 30.2 SQ. IN.

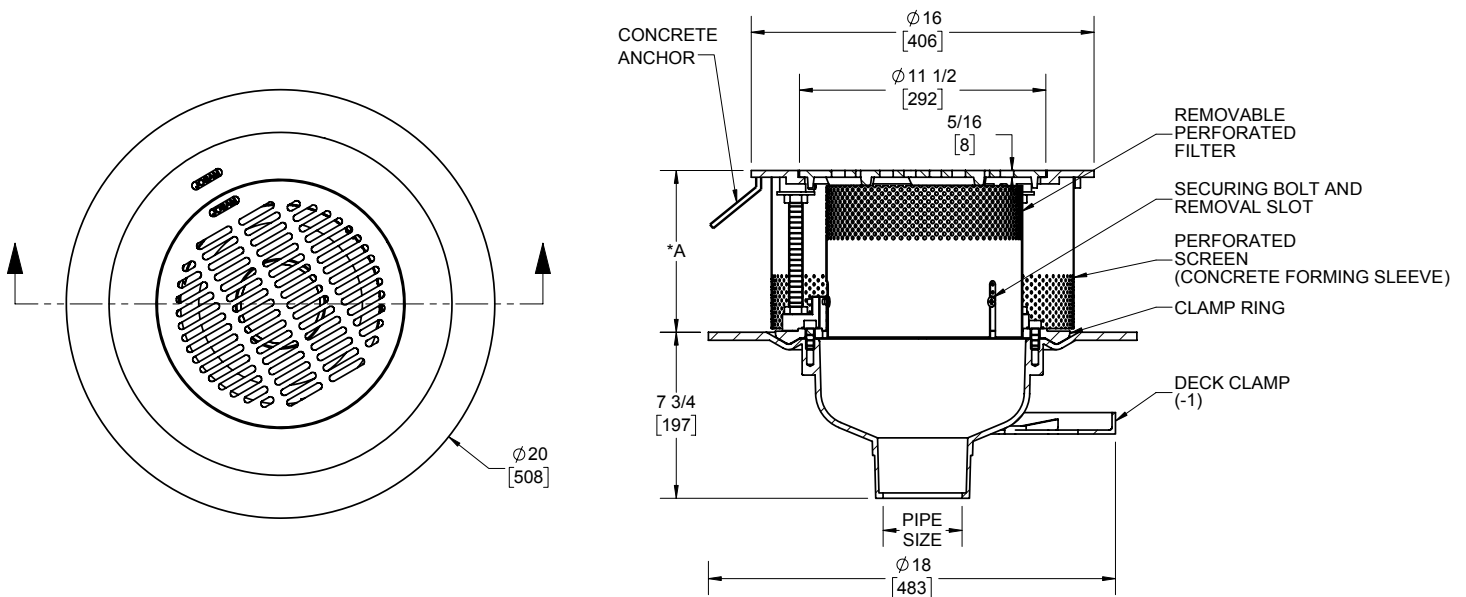
Slot width: 3/16"

(-50 and -51 slot width: 1/4" IN.)

Meets ADA and heel-proof requirements.



(SCREENS CUT AWAY)



-1	Deck clamp assy
-20	Galvanized cast iron parts
-50	Satin finish nikaloy top
-51	Satin finish bronze top
-VP	Secured grate, VP
-66	No-hub side outlet

Pipe Size
2"
3"
4"
5"
6"

* "A" DIM. = _____
(3" STD., 12" MAX.)

Josam product specifications in U.S. customary units are approximate and provided for reference only. For precise measurements, please contact Josam Technical Support. Josam reserves the right to change or modify product design, construction, specifications, or materials without prior notice and without incurring any obligation to make such changes and modifications on Josam products previously or subsequently sold.

Notes:



A WATTS Brand