

30000-T

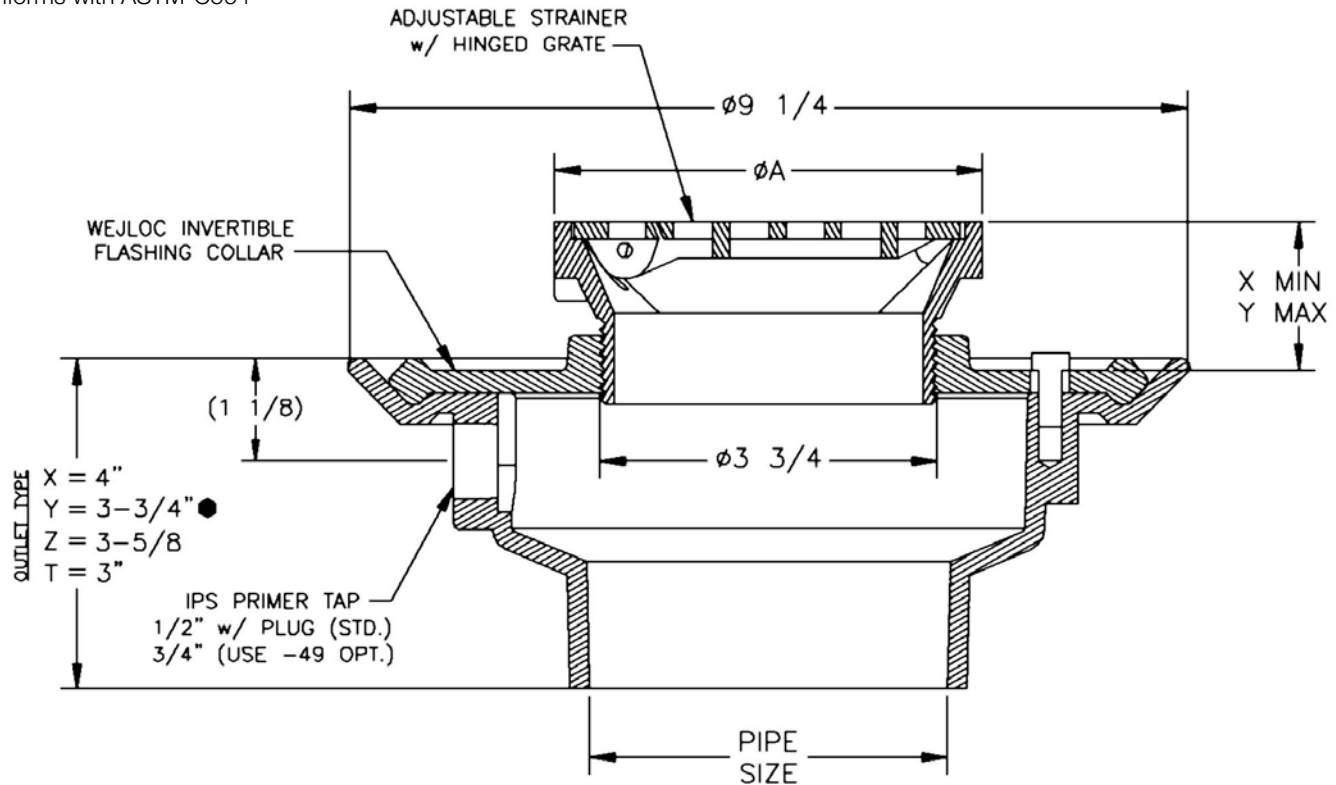
Floor Drain

Adjustable Floor Drain

Specification

Josam 30000-T series cast iron floor drain, two-piece body with double drainage flange and 1/2" primer tap, Wejloc® invertible flashing collar, weepholes, bottom outlet connection and nikaloy adjustable square hinged grate.

- Gasket on -Y connection conforms with ASTM-C564



-TSO	Threaded side outlet
-ST	With shallow trap (2" and 3" only)
-PD	Prison drain (2" and 3" only)
-ARE	Acid-resisting epoxy
-49	3/4" primer tap
-91	Rough bronze body
-92	Galvanized cast iron parts
-SC	Solid cover (6T size only)

-2	Bronze adjustable strainer
-80	Perforated stainless steel basket
-J	Backwater valve
-VP	Secured grate, vandal-proof screws
-T	Threaded outlet
-X	Inside caulk outlet
-Y	Hub outlet with gasket ●
-Z	No-hub spigot outlet

Strainer	A	X	Y	Free area
-5T	4 13/16	1 1/4	2 1/8	6.5
-6T	6	1 3/8	2 1/8	8.3
-9T	9	1 1/2	2 1/2	28.6

Pipe Size
2"
3"
4"

Josam product specifications in U.S. customary units are approximate and provided for reference only. For precise measurements, please contact Josam Technical Support. Josam reserves the right to change or modify product design, construction, specifications, or materials without prior notice and without incurring any obligation to make such changes and modifications on Josam products previously or subsequently sold.

Notes:



A WATTS Brand