

46200

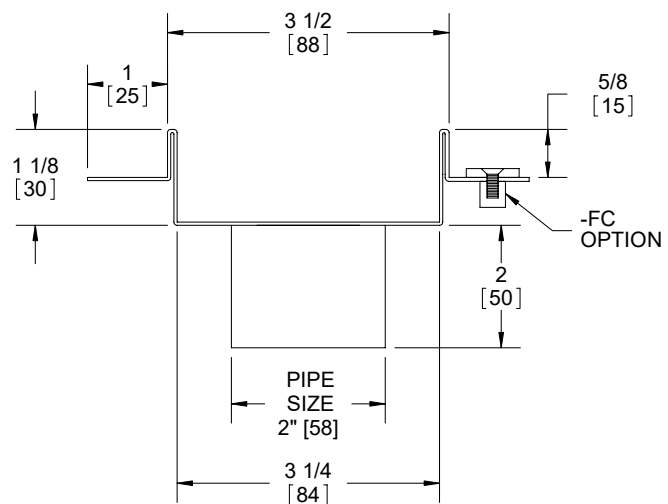
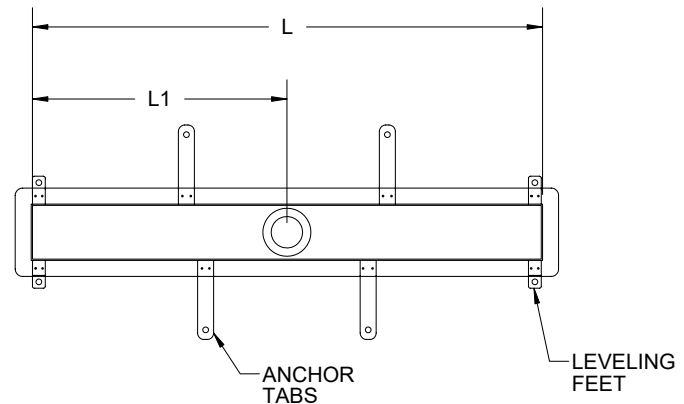
SS Shower Channel With Flange Specification

Josam series 46200 fabricated stainless steel (type 304, 1 mm), 3-1/2" wide plus flange, with anchor tabs and leveling feet, with bottom connection and brushed finish perforated grate options.

Run lengths longer than 10' provided with flanges, gaskets, and hardware.

See separate drawing for grate details.

* Separate submittal is available.



Specifications:

- ☐ Linear run
- ☐ Total run length (L) = _____
- ☐ Outlet at end of run
- ☐ Outlet mid-run (Spec. length L1) = _____
- ☐ Non-linear run

Provide sketch with critical length dimensions and outlet location(s).

Authorized project signature and date:

Name: _____

Title: _____

Signature: _____

Date: _____

Note: All SS channels are custom fabricated. Orders are non-cancellable and non-returnable

OPTIONS:

<input type="checkbox"/>	-PF	Polished finish grate
<input type="checkbox"/>	-FB	Filter basket (flat strainer)
<input type="checkbox"/>	-PFO	Push-fit outlet size
<input type="checkbox"/>	-316	Type 316L material
<input type="checkbox"/>	-BW	Butt-weld outlet (spec. 10, 40, 80)
<input type="checkbox"/>	-FC	Flange clamp
<input type="checkbox"/>	-T	Threaded outlet, female
<input type="checkbox"/>	-FCO*	Flange and clamp outlet

	Model	Grate type
<input type="checkbox"/>	46212	Balena
<input type="checkbox"/>	46222	Spigola
<input type="checkbox"/>	46232	Vipera
<input type="checkbox"/>	46242	Murena
<input type="checkbox"/>	46252	Goccia
<input type="checkbox"/>	46262	Pietra

Josam product specifications in U.S. customary units are approximate and provided for reference only. For precise measurements, please contact Josam Technical Support. Josam reserves the right to change or modify product design, construction, specifications, or materials without prior notice and without incurring any obligation to make such changes and modifications on Josam products previously or subsequently sold.

Notes:

