

60100H-ET

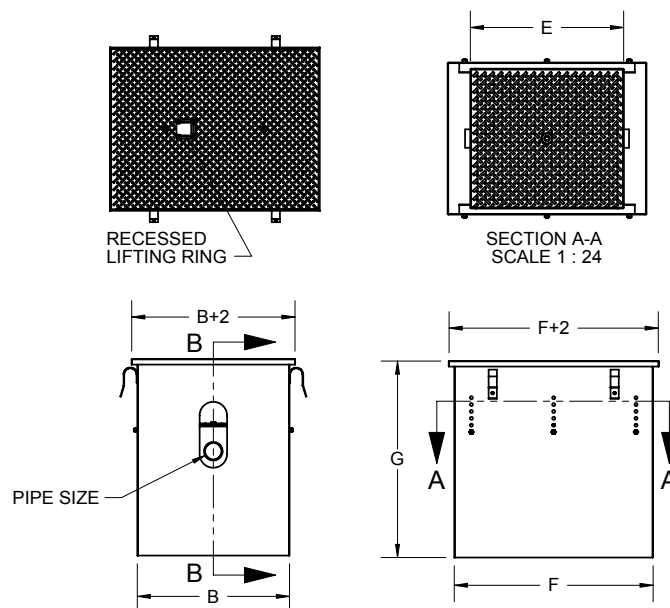
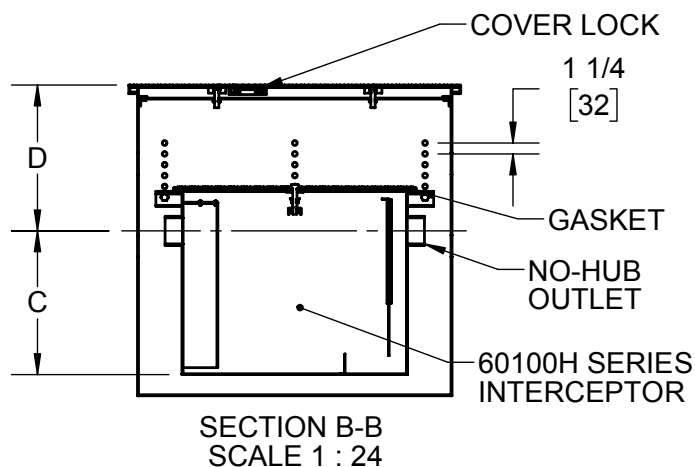
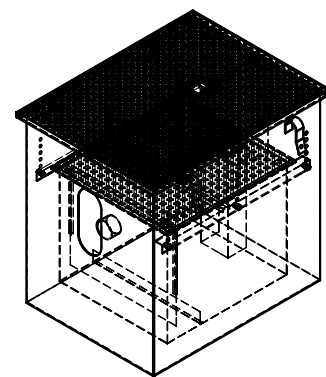
Grease Interceptor

Manual Enclosed Type

Specification

Josam 60100H-ET series epoxy coated fabricated steel grease interceptor, deep roughing flush-with-floor type, no-hub connections, internal trap, removable diffuser baffle, gasketed non-skid cover, flow control fitting, PDI seal of approval and steel enclosure cabinet with non-skid cover and adjustable interceptor carriers brackets.

Conforms to plumbing and drainage institute standards PDI-G101



Note: Interceptor support brackets adjustable for varying depths of floor construction.

		Type	Flow rate	Cap. (LBS.)	Pipe size	B	C	D*	E	F	G
	-40	Cover recess for floor finish									
	-61	Flange and clamp device									
	-85	Enzymatic port in cover									
	-ISI	Integrated solids interceptor									
X	-ET	Enclosed type									
	-HD	Heavy-duty cover									
		60102H-ET	7	14	2	15	8-1/4	8-3/4	14-7/8	23	25-3/4
		60103H-ET	10	20	2	16-1/2	8-1/2	8-3/4	16-5/8	24-3/4	26
		60104H-ET	15	30	2	19	9-1/2	8-3/4	20-3/8	28-1/2	27
		60105H-ET	20	40	3	21	12	10-1/4	20-7/8	29	31
		60106H-ET	25	50	3	23-1/2	13	10-1/4	23-3/8	31-1/2	32
		60107H-ET	35	70	3	25	14-1/2	10-1/4	26-1/8	34-1/4	33-1/2
		60108H-ET	50	100	3	27-1/2	16-1/2	10-1/4	27-7/8	36	35-1/2
		60109H-ET	75	150	3	33	21	11-3/8	41	49-1/8	41-1/8
		60110H-ET	100	200	4	37	23	13-3/8	47	55-1/8	45-1/8

*Dimensions based on interceptor in position #6 subtract 1-1/4" per each succeeding higher position.

Josam product specifications in U.S. customary units are approximate and provided for reference only. For precise measurements, please contact Josam Technical Support. Josam reserves the right to change or modify product design, construction, specifications, or materials without prior notice and without incurring any obligation to make such changes and modifications on Josam products previously or subsequently sold.

Notes:

