

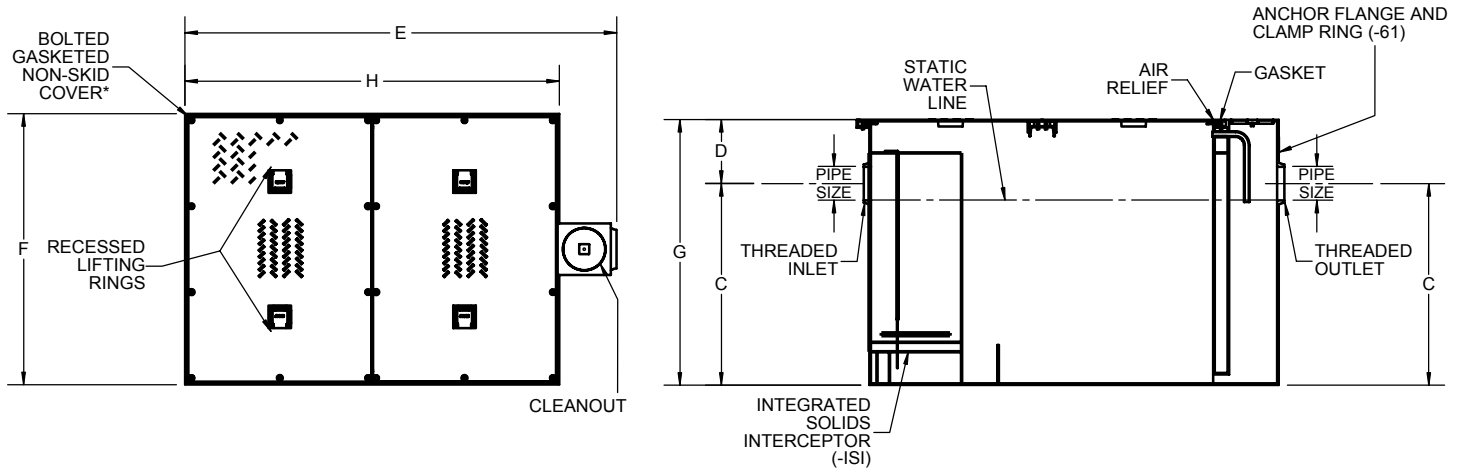
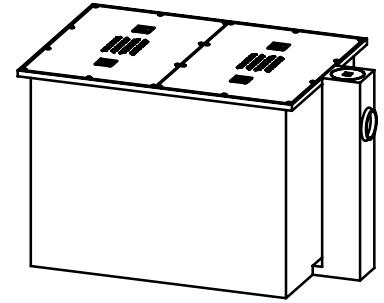
# 60210A-ISI

## Grease Interceptor

### Manual High-Volume Type

#### Specification

Josam 60210A-ISI series acid resistant epoxy coated fabricated steel grease interceptor, high volume, threaded connections, internal air-relief, visible double wall trap, integrated solids interceptor, gasketed non-skid cover and flow control fitting.



Product is non-cancellable  
and non-returnable

Name: \_\_\_\_\_ Signature: \_\_\_\_\_ Date: \_\_\_\_\_

#### OPTIONS:

	-60	Anchor flange
	-61	Flange and clamp device
<b>X</b>	-ISI	Integrated solids interceptor
	-HD	Heavy-duty cover

	Type	Flow rate	Cap. (LBS)	Pipe size	C	D	E	F	G	H
	* 60213A-ISI	150	300	4	27	8	60	39	35	53
	60214A-ISI	200	400	5	31-1/2	10	67	42	41-1/2	58
	60215A-ISI	250	500	5	35-1/2	10	72	46	45-1/2	63
	60216A-ISI	350	700	6	39-1/2	12	80	52	51-1/2	71
	60217A-ISI	500	1000	6	43-1/2	12	91	59	55-1/2	82

\* This size furnished with one-piece cover.

Josam product specifications in U.S. customary units are approximate and provided for reference only. For precise measurements, please contact Josam Technical Support. Josam reserves the right to change or modify product design, construction, specifications, or materials without prior notice and without incurring any obligation to make such changes and modifications on Josam products previously or subsequently sold.

#### Notes:



**A WATTS Brand**