

JF

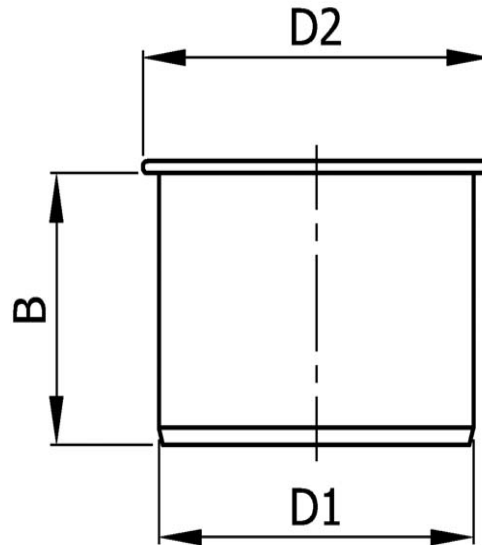
SS Fitting

Push-Fit™ Blind Plug

Specification

Josam Push-Fit™ type 316L stainless steel fitting, blind plug with EPDM gasketed socket on one end.

Dimensions in inches [mm] unless otherwise noted.



	Part Number	NOM. Pipe Size	D1 (Pipe O.D.)	D2	B
	JF-2480	1-1/2"	1.7 [42]	2.0 [50]	1.2 [30]
	JF-2482	2"	2.1 [53]	2.4 [60]	1.5 [38]
	JF-2484	3"	2.9 [73]	3.1 [80]	2.2 [55]
	JF-2486	4"	4.0 [102]	4.4 [112]	2.8 [70]
	JF-2490	6"	6.3 [159]	6.9 [174]	3.1 [80]
	JF-2492	8"	8.6 [219]	9.4 [239]	4.7 [120]

Josam product specifications in U.S. customary units are approximate and provided for reference only. For precise measurements, please contact Josam Technical Support. Josam reserves the right to change or modify product design, construction, specifications, or materials without prior notice and without incurring any obligation to make such changes and modifications on Josam products previously or subsequently sold.

Notes:

