

12674-32-35

Closet Carrier

Left Hand

Specification

Josam 12674-32-35 series coated cast iron single horizontal 4" no-hub left-hand offset fitting with 2" no-hub vent and adjustable carrier body for HDCP height, invertible for siphon jet or blowout closets, with ABS extension with integral test cap, pylon feet, anchor foot, plated hardware and neoprene fixture gasket.

* Recommend feet be secured to floor with 1/2 fasteners and anchors (by others).

⊗ For dimensions shorter than 5-1/2" (1" min.) cut extension. For longer extension length (10-1/2" max.) specify (-10).

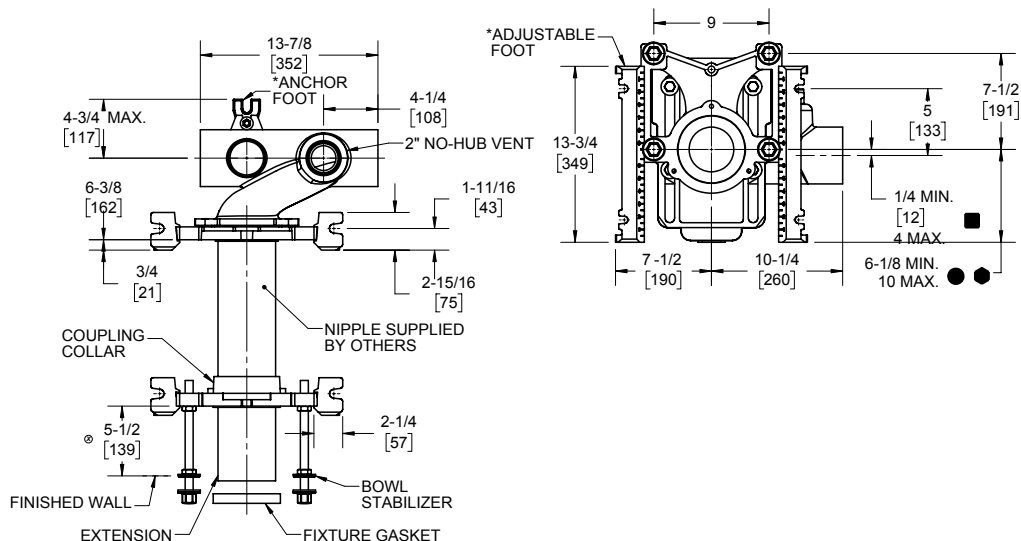
Siphon jet dimensions shown.
For blowout dimensions, use:

■ Min 2" and max 4"

● Min 11" and max 16 1/2"

● For siphon jet roughing over 6" or blowout roughing over 12-1/2" specify on order.

⊙ Auxiliary inlet is 6" offset from vent.



-PF	Pylon foot (standard)
-OR	O-ring carrier
-SD	Special-duty 500 LBS. carrier
-AUX	⊙ Auxiliary inlet (2" no-hub)
-HUB AUX	⊙ Auxiliary inlet (2" hub)
-VP	Secured trim
-1	Positioning frame
-58	Horizontal no-hub cast long barrel

-XSD	Extra special-duty 1,000 LBS. carrier
-6	Supply pipe support (specify type of pipe)
-10	ABS extension through 10-1/2" wall
-24	Floor mounted back outlet china bowl
-30	Cast iron adj. ext. with connector
-30-2	Cast iron adj. ext. with connector and test cap
X -32	Carrier for wide chase installations
X -35	Carrier for wheel chair high rough

Josam product specifications in U.S. customary units are approximate and provided for reference only. For precise measurements, please contact Josam Technical Support. Josam reserves the right to change or modify product design, construction, specifications, or materials without prior notice and without incurring any obligation to make such changes and modifications on Josam products previously or subsequently sold.

Notes:



A WATTS Brand