

# 12694

## Closet Carrier

### Back-To-Back

#### Specification

Josam 12694 series coated cast iron double horizontal 4" no-hub fitting with 2" no-hub vent and adjustable carrier body, ABS extension with integral test cap, pylon feet, plated hardware and neoprene fixture gasket, invertible for siphon jet or blowout closets. Carrier meets ASME requirements at 500 LBS.

△ For dimension shorter than 5-1/2" (1" min) cut extension. For longer extension (10-1/2" max) specify (-10).

☒ Recommend feet be secured to floor with 1/2" bolts and anchors (by others).

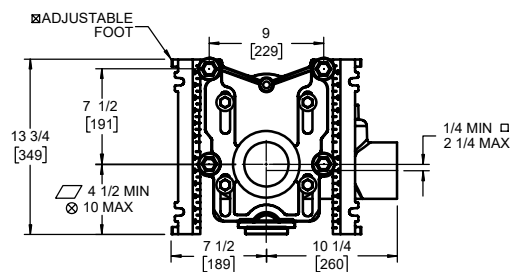
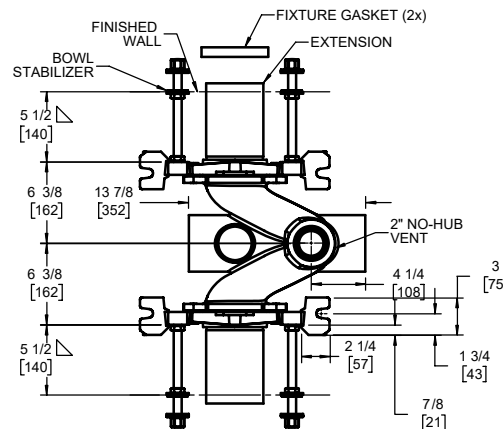
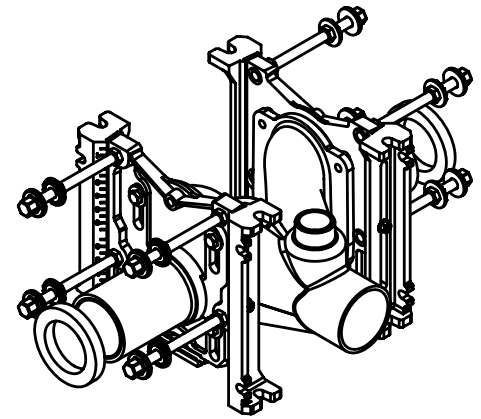
⊗ For siphon jet roughing over 6" or blowout roughing over 12-1/2" specify on order.

Siphon jet dims shown.  
For blowout dims, use:

□ Min 2" and max 4"

▧ Min 11" and max 16 1/2"

⊙ Aux inlet is 6" offset from vent.



-PF	NPT FCPLT and EXT - STD
-OR	O-ring FCPLT and EXT
-CR	Comp. ring FCPLT and EXT
-HS	Hub and spigot
-PAF	Prefab adjustable foot
-AUX	Auxiliary inlet (2" no-hub)
-HUB AUX	Auxiliary inlet (2" hub)
-VP	Vandal-proof trim
-1	Positioning frame
-6	Supply pipe support (specify type of pipe)

-10	ABS extension through 10-1/2" wall
-24	Floor mounted back outlet china bowl
-30	Cast iron adj. extension w/ connector
-30-2	CI adj. extension w/ connector and test cap
-32	Carrier for wide chase installations
-35	Carrier for wheelchair high rough
-58	Horizontal no-hub cast long barrel
-SDH	750 LB carrier
-XSD	Extra special duty 1,000 LB carrier

Josam product specifications in U.S. customary units are approximate and provided for reference only. For precise measurements, please contact Josam Technical Support. Josam reserves the right to change or modify product design, construction, specifications, or materials without prior notice and without incurring any obligation to make such changes and modifications on Josam products previously or subsequently sold.

Notes:

